



# Z874-U-4-HDS

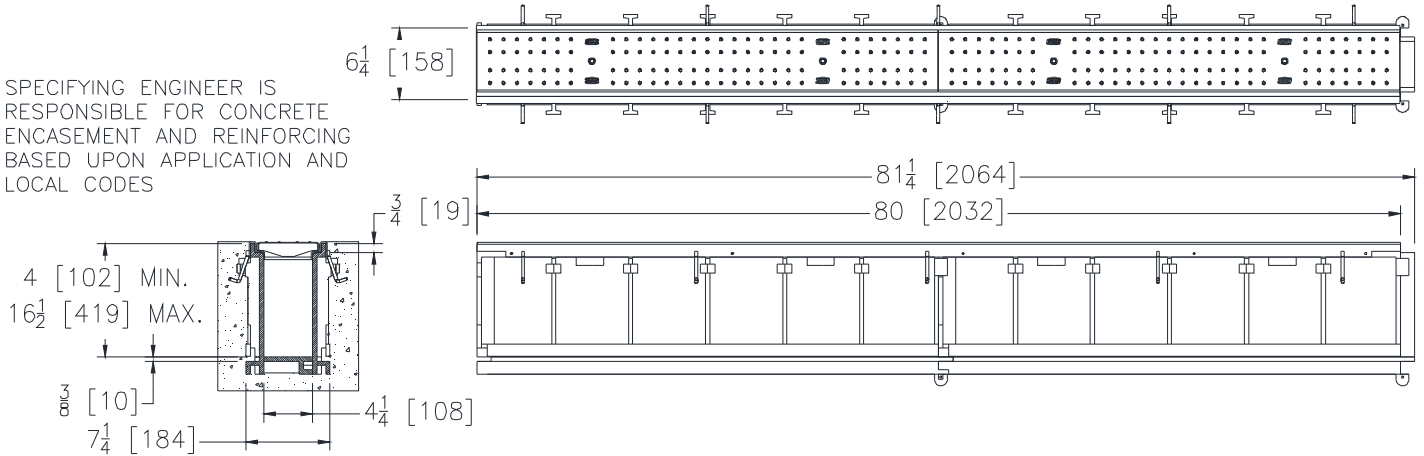
UTILITY TRENCH W/ HEAVY DUTY STAINLESS STEEL  
FRAME 4-1/4" THROAT WIDTH & COVER

SPECIFICATION SHEET

TAG \_\_\_\_\_

Dimensional Data (inches and [ mm ]) are Subject to Manufacturing Tolerances and Change Without Notice

SPECIFYING ENGINEER IS RESPONSIBLE FOR CONCRETE ENCASEMENT AND REINFORCING BASED UPON APPLICATION AND LOCAL CODES



**ENGINEERING SPECIFICATION:** Zurn Z874-U-4-HDS Channels shall be 80 [2032] long, 6.25 [159] wide reveal and have a 4.25 [108] wide throat. Modular channel sections shall be made of 0% water absorbent High Density Polyethylene (HDPE). Shall have a positive mechanical connection between channel sections that will not separate during the installation and shall mechanically lock into the concrete surround every 10 [254]. Channels shall weigh less than 2.31 lbs. [1.05kg] per linear foot, smooth bottom with a Manning's coefficient of 0.009 and neutral 0% built in slope. Shall be provided with standard RSC covers that lock down to frame. Zurn 5.375 [137] wide reveal Stainless Steel Cover conforming to ASTM specification A351, Grade CF8 (type 304), cast grate is rated class B per the DIN EN1433 top load classification. Supplied in 20 [508] nominal lengths and 0.75 [19] bearing depth. The 0.105 [2.66] thick Heavy-Duty Stainless Steel Frame Assembly conforms to ASTM specification A-240 (type 304). with 10 - 4 [102] long concrete anchors per 80 [2032]. Grate lockdown bars are to be integral to the frame. All welds must be performed by a certified welder per ASTM standard AWS D1.6. Frames Shall be produced in the U.S.A.

**PREFIX OPTIONS (Check/specify appropriate options)**

- Z Six-foot, Eight-inch High Density Polyethylene (HDPE) channel, Stainless Steel Heavy Duty Frame with anchor studs\*

**SUFFIX OPTIONS (Check/specify appropriate options)**

**Outlet Adapters Add/Each**

- E1 Closed End Cap
- E2 2 [51] No-Hub End Outlet (6 [152] min.)
- E4 4 [102] No-Hub End Outlet (8 [203] min.)
- E6 6 [152] No-Hub End Outlet (10 [254] min.)
- U4 4 [102] No-Hub Bottom Outlet
- U6 6 [152] No-Hub Bottom Outlet

**Grate Options (Load Classifications are per DIN EN1433)**

- DCE Ductile Iron Solid Cover - Class E
- RSCC Reinforced Stainless Steel Cover - Class C

**Made in the U.S.A. (Load Classifications are per DIN EN1433)**

- SC-USA Stainless Steel Cover - Class A\*

**Miscellaneous Options**

- DB Bottom Dome Strainer
- SSGL Stainless Steel Lockdown
- VP Vandal-Proof Lockdown

\* Regularly furnished unless otherwise specified.

Supplied By:



877-903-7246

www.trenchdrainsupply.com

Zurn Industries, LLC | Specification Drainage Operation  
 1801 Pittsburgh Avenue, Erie, PA U.S.A. 16502 · Ph. 855-663-9876, Fax 814-454-7929  
 In Canada | Zurn Industries Limited  
 3544 Nashua Drive, Mississauga, Ontario L4V 1L2 · Ph. 905-405-8272, Fax 905-405-1292  
[www.zurn.com](http://www.zurn.com)

Rev. A  
 Date: 06/04/14  
 C.N. No. 131064  
 Prod. | Dwg. No. Z874-U-4-HDS