

Neenah R-4990-CA Airport

Series

R-4990-CA

Cut Sheet

12" Wide Airport Bolted

12" Wide NEENAH Airport Bolted Extra Heavy Duty Trench Drain Grates and Frames

Product ID: R-4990-CA



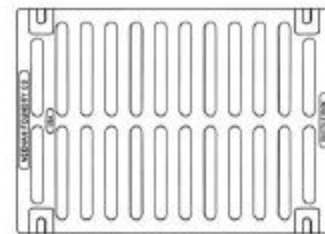
12" Wide Airport Neenah R-4990-CA Series Trench Grate and Frame

Frame is included / Bolted assembly - Please call if only Grate is needed.

Catalog No.	A	B	C	Grate Matl.
R-4990-AA	8	2	6	Gray Iron
R-4990-BA	10	2	8	Gray Iron
R-4990-CA	12	2	10	Ductile Iron
R-4990-DA ***	14	2	12	Ductile Iron
R-4990-EA *	17	2	15	Ductile Iron
R-4990-FA *	20	2	18	Ductile Iron
R-4990-HA *	26	2	24	Ductile Iron
R-4990-KA2 *	34	2	31	Ductile Iron
R-4990-OA *	51	2	48	Ductile Iron

* Type D solid cover available.

** Type C grate available.



TYPE "A"
GRATE OPENINGS

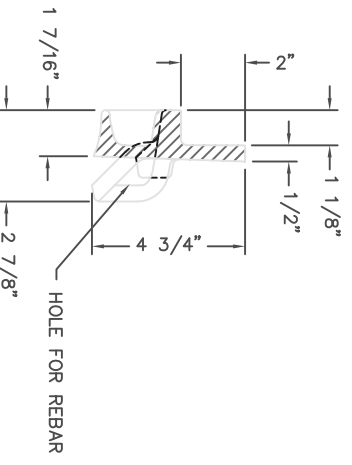
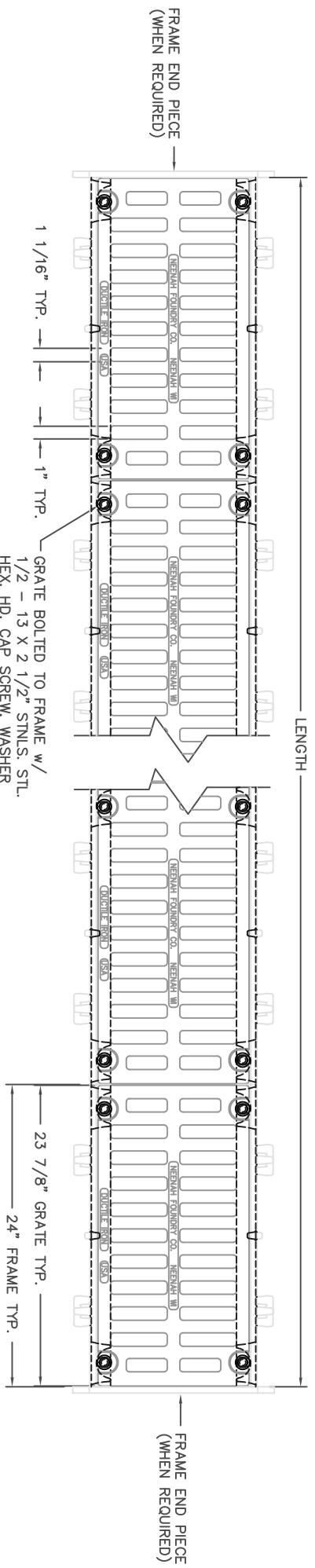
These trench drains are capable of supporting the heavy wheel loads of today's commercial environments. Grates are bolted to gray iron frames.

Suitable for aircraft loading per FAA Advisory Circular AC150/5320-6D.

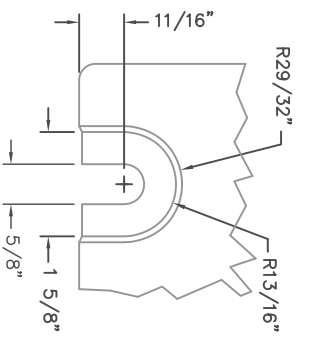
Gray iron furnished per ASTM-A48 Class 35B.

Ductile Iron furnished per ASTM A536 Grade 80-55-06.

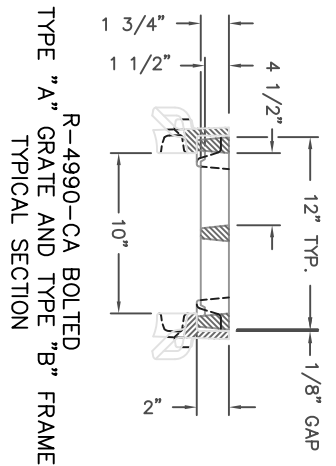




FRAME SECTION VIEW
 SCALE 1:4



TYPICAL BOLT SLOT DETAIL
 SCALE 1:2



**R-4990-CA BOLTED
 TYPE "A" GRATE AND TYPE "B" FRAME
 TYPICAL SECTION**

COMP. NOS.: SIDE FRAME 4999-2400; END FRAME 4990-3112; GRATE 4999-2012
 MATERIAL: FRAME - CAST GRAY IRON ASTM A-48, CLASS 35B
 GRATE - CAST DUCTILE IRON ASTM A-536, 55 + KSI YIELD
 FINISH: NO PAINT

CAD DWG. REF: 4990CA AB.DWG-1

DR.	E. NIVER	SCALE	TITLE
CH.		1/8"=1"	R-4990-CA DOUBLE BOLT STYLE
APP.		DMT GHK	TYPE "A" GRATE w/ TYPE "B" FRAME
DATE	11-20-2009		NEENAH FOUNDRY COMPANY NEENAH WISCONSIN 54956
			NEE
			NF-
			B

R-4990 Airport, Port & Heavy Industrial Series

BOLTED TRENCH FOR EXTRA HEAVY DUTY APPLICATIONS

These trench drains are capable of supporting the heavy wheel loads of today's commercial environments. For larger trench widths or greater loading requirements, please contact our Product Engineering Department.

Grates are bolted to gray iron frames.

For suggested forming procedures, see page 285.

Suitable for aircraft loading per FAA Advisory Circular AC150/5320-6D.

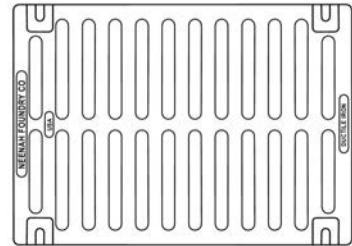
Catalog No.	A	B	C	Grate Matl.
R-4990-AA	8	2	6	Gray Iron
R-4990-BA	10	2	8	Gray Iron
R-4990-CA	12	2	10	Ductile Iron
R-4990-DA * **	14	2	12	Ductile Iron
R-4990-EA *	17	2	15	Ductile Iron
R-4990-FA *	20	2	18	Ductile Iron
R-4990-HA *	26	2	24	Ductile Iron
R-4990-KA2 *	34	2	31	Ductile Iron
R-4990-OA *	51	2	48	Ductile Iron

* Type D solid cover available.

** Type C grate available.

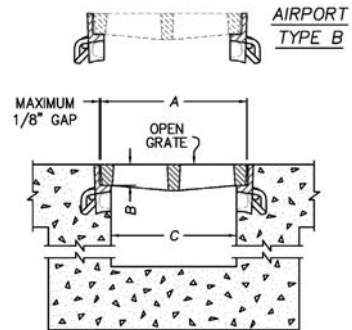
Gray iron furnished per ASTM-A48 Class 35B.

Ductile Iron furnished per ASTM A536 Grade 80-55-06.



TYPE 'A'
GRATE OPENINGS

These grates are also available with superior duty R-4993 & R-4994 frames as shown on page 287.



Supplied By:

**TRENCHDRAIN
SUPPLY**

877-903-7246

www.trenchdrainsupply.com