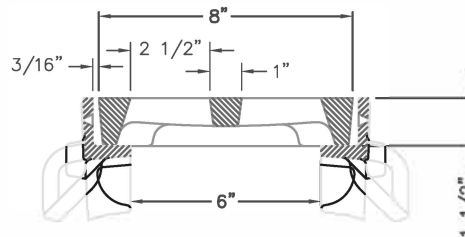
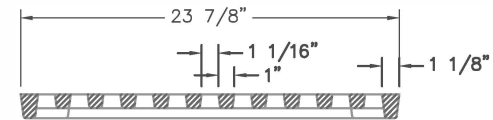


TYPICAL FRAME SECTION
(SCALE: 1/4"=1")



R-4990-AX TYPICAL SECTION
TYPE "A" GRATE w/ TYPE "B" FRAME
(SCALE: 1/4"=1")



TYPICAL GRATE SECTION

NOTES: MEETS H20 LOAD RATING. FRAMES ARE FURNISHED IN STANDARD 2'-0" INCREMENTS. GRATES FURNISHED IN STANDARD 2'-0" INCREMENTS. SPECIAL LENGTH GRATES CAN BE FURNISHED FOR ANY OVERALL LENGTH.

COMPONENT NO'S: SIDE PC. FRAME 4999-2415; END PC. FRAME 4990-3108; GRATE 4990-3081

MATERIAL: CAST GRAY IRON ASTM A-48, CLASS 35B

FINISH: NO PAINT

Supplied By:

**TRENCHDRAIN
SUPPLY**

877-903-7246

www.trenchdrainsupply.com

DR. CAG	SCALE 1/8"=1"	TITLE: R-4990-AX TRENCH TYPE "A" GRATE w/ TYPE "B" FRAME
CH. RKB		
APP. SPT	NEENAH FOUNDRY NEENAH WISCONSIN 54956 PHONE 800-558-5075 LINCOLN, NEBRASKA 68529 PHONE 800-234-7486	
DATE 09-03-2013		
www.neenahfoundry.com		NF-4990AX A B