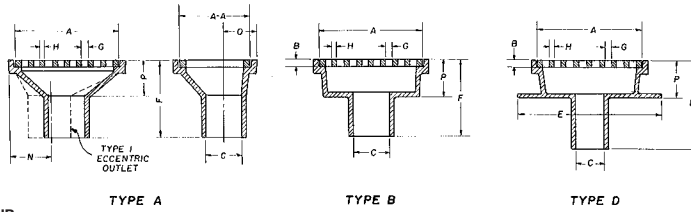


R-4015 to R-4016 Series
Roadway and Deck Drain

Heavy Duty



Illustrating R-4015-A

| CATALOG NUMBER | GRATE TYPE | SQ. FT. OPEN | WEIR PERIMETER LINEAL FEET |
|----------------|------------|--------------|----------------------------|
| R-4015-A | B | 0.2 | 3.6 |
| R-4015-A | P | 0.1 | 3.6 |
| R-4015-A1 | B | 0.2 | 3.6 |
| R-4015-B | C | 0.4 | 3.6 |
| R-4015-C | B | 0.3 | 3.6 |
| R-4015-D | B | 0.2 | 3.6 |
| R-4015-D | P | 0.1 | 3.6 |
| R-4016-B | C | 0.5 | 4.8 |
| R-4016-H1 | A | 0.6 | 5.3 |
| R-4016-K | B or D | 1.0 | 6.3 |

For use on decks of elevated parking garages, access ramps, roadways, and viaducts.

| Catalog No. | Dimensions in inches | | | | | | | | | | Spigot Type |
|---------------|----------------------|----|-------|---|-----------------|--------|---------------|-------|-------|-------|-------------|
| | A | AA | B | C | E | F | G | H | O | P | |
| R-4015-A | 11 | 9 | 1 | 4 | - | 12 1/2 | 1 x 7 | 1 | 3 5/8 | 5 1/2 | A |
| R-4015-A1 *** | 11 | 9 | 1 | 4 | - | 16 1/2 | 1 x 7 | 1 | 3 5/8 | 5 1/2 | A |
| R-4015-B | 11 | 9 | 1 | 4 | - | 12 1/2 | 1 1/2 x 4 | 1 | 3 5/8 | 5 1/2 | A |
| R-4015-B1 | 11 | 9 | 1 | 4 | - | 20 | 1 1/2 x 4 | 1 | 3 5/8 | 5 1/2 | A |
| R-4015-C | 11 | 9 | 1 | 5 | - | 10 5/8 | 1 x 7 | 1 | - | 5 5/8 | B |
| R-4015-D | 11 | 9 | 1 | 5 | 16 1/2 x 18 1/2 | 14 | 1 x 7 | 1 | - | 6 1/8 | D |
| R-4016-B | 17 | 12 | 1 1/4 | 6 | - | 12 1/2 | 1 1/8 x 4 1/4 | 1 1/8 | 5 3/8 | 6 | A |
| R-4016-C | 17 | 12 | 1 1/4 | 6 | 13 3/4 | 20 | 1 1/8 x 4 1/4 | 1 1/8 | 9 3/8 | 6 | B |
| R-4016-H1 ** | 13 | 19 | 1 1/4 | 6 | - | 12 1/2 | 1 x 5 3/16 | 1 | 5 3/8 | 5 1/2 | 1 |
| R-4016-K * | 19 | 19 | 1 1/4 | 6 | - | 12 1/2 | 1 x 17 | 1 | 5 3/8 | 5 1/2 | A |

* 2" adjusting ring available, see R-1979 Series.

** Type 1 eccentric outlet furnished only on R-4016-H1. N = 5-3/8"

*** Outlet adapted for 6" inside pipe tap (6" internal NPT).

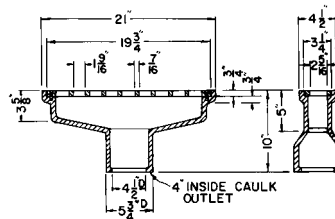
R-4015-A through R-4015-D are also available with grate Type P.



Type P

R-4018
Parking Garage Drain

Heavy Duty



| CATALOG NUMBER | GRATE TYPE | SQ. FT. OPEN | WEIR PERIMETER LINEAL FEET |
|----------------|------------|--------------|----------------------------|
| R-4018 | B | 0.2 | 3.8 |

Grate furnished in Ductile Iron.