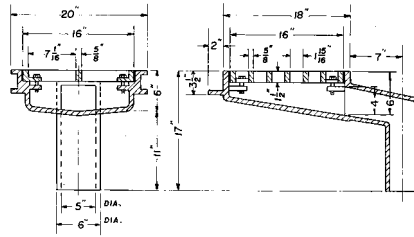


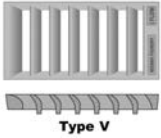
**R-3935
Offset Roadway Scupper, Bolted Grate**

Heavy Duty

CATALOG NUMBER	GRATE TYPE	SQ. FT. OPEN	WEIR PERIMETER LINEAL FEET
R-3935	A or C	0.6	5.3
R-3935	V	1.5	5.3



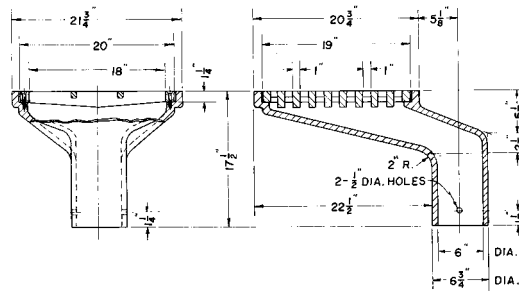
Standard Grate (shown): Type C
Alternate grate(s):



**R-3936-A
Offset Roadway Scupper, Bolted Grate**

Heavy Duty

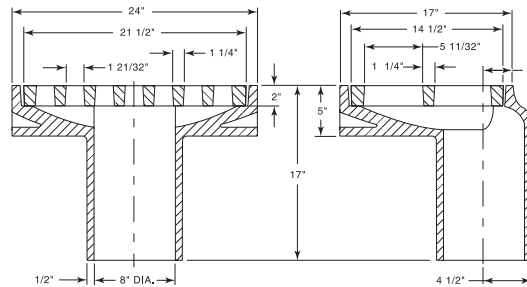
CATALOG NUMBER	GRATE TYPE	SQ. FT. OPEN	WEIR PERIMETER LINEAL FEET
R-3936-A	C	1.0	6.5



**R-3940
Offset Roadway Scupper**

Heavy Duty

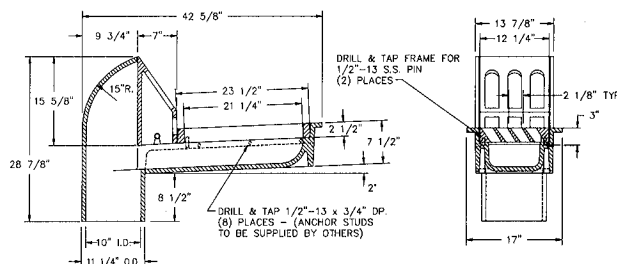
CATALOG NUMBER	GRATE TYPE	SQ. FT. OPEN	WEIR PERIMETER LINEAL FEET
R-3940	A	1.0	6.1



**R-3942
Bridge Scupper**

Heavy Duty

CATALOG NUMBER	GRATE TYPE	SQ. FT. OPEN	WEIR PERIMETER LINEAL FEET
R-3942	V	0.8	5.1



Grate in Ductile Iron.

BRIDGE SCUPPERS
6