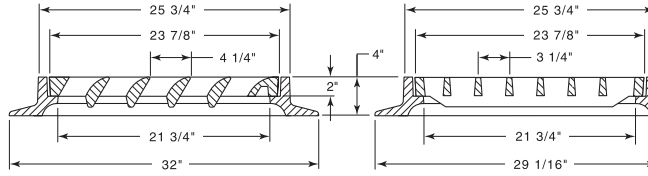


**R-3589-LL4**  
**3-Flange Gutter Inlet Frame, Grate**

Heavy Duty



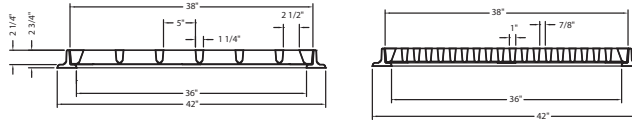
CATALOG NUMBER	GRATE TYPE	SQ. FT. OPEN	WEIR PERIMETER LINEAL FEET
R-3589-LL4	L	1.5	7.9
R-3589-LR4	L	1.5	7.9

Unit illustrated is for flow to the left. If flow to the right is required, order **R-3589-LR4**.

**R-3590**  
**Gutter Inlet Frame, Grate**

**NEW**

Medium Duty

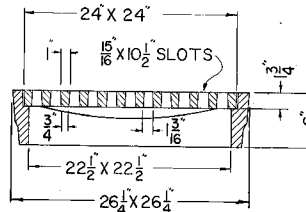


CATALOG NUMBER	GRATE TYPE	SQ. FT. OPEN	WEIR PERIMETER LINEAL FEET
R-3590	C	3.0	12.7

Meets traffic load called for in AA-6005 of 25,000# proof load.

**R-3591**  
**Gutter Inlet Frame, Grate**

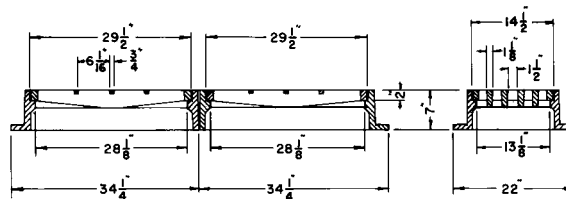
Heavy Duty



CATALOG NUMBER	GRATE TYPE	SQ. FT. OPEN	WEIR PERIMETER LINEAL FEET
R-3591	A	1.5	8.0

**R-3593**  
**Double Unit Inlet Frame, Grate**

Heavy Duty



CATALOG NUMBER	GRATE TYPE	SQ. FT. OPEN	WEIR PERIMETER LINEAL FEET
R-3593	C	2.5	12.3

ROLL & GUTTER INLETS  
5