

Location: \_\_\_\_\_



## T2000-CB820 and T2000-CB820-13 Catch Basin



### Specification:

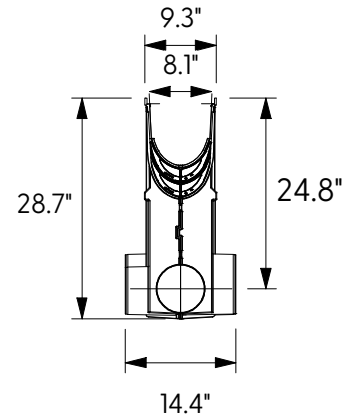
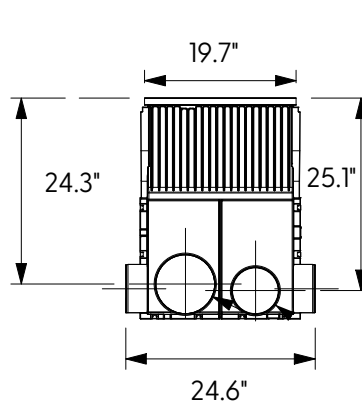
MIFAB®'s T2000-CB820 Catch Basin shall be 19.7"(500mm) long with a 8" (200mm) internal width. The catch basin 28.7" deep. It is available with a 6" or 8" outlet. A sediment bucket is included with every basin. The catch basin is made from High Strength Glass Reinforced Polyester (GRP). Each catch basin comes with either ne edge rail or galvanized edge rail. The catch basins achieve Load Class A-E depending on the grate utilized.



**T2000-CB820**  
**No Edge Rail**



**T2000-CB820-13**  
**Galvanized Edge Rail**



**6" OUTLET CATCH BASIN**  
**(8" OUTLET ALSO AVAILABLE)**  
**Sediment bucket included**

NO EDGE INTEGRAL RAILS	GALVANIZED STEEL INTEGRAL RAILS
T2000-CB820	T2000-C8620-13

Job Name: \_\_\_\_\_

Page No: \_\_\_\_\_

Section No: \_\_\_\_\_

Contractor: \_\_\_\_\_

Schedule No: \_\_\_\_\_

Purchase Order No: \_\_\_\_\_

Revision Date: 2022-01-27

CALIFORNIA PROPOSITION 65 WARNING. This product contains chemicals known to the State of California to cause cancer and birth defects or other reproductive harm.

MIFAB reserves the right to make changes in material and design without formal notice and obligation.

USA: 1-800-465-2736 [www.mifab.com](http://www.mifab.com) CAN: 1-800-387-3880