

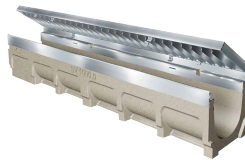
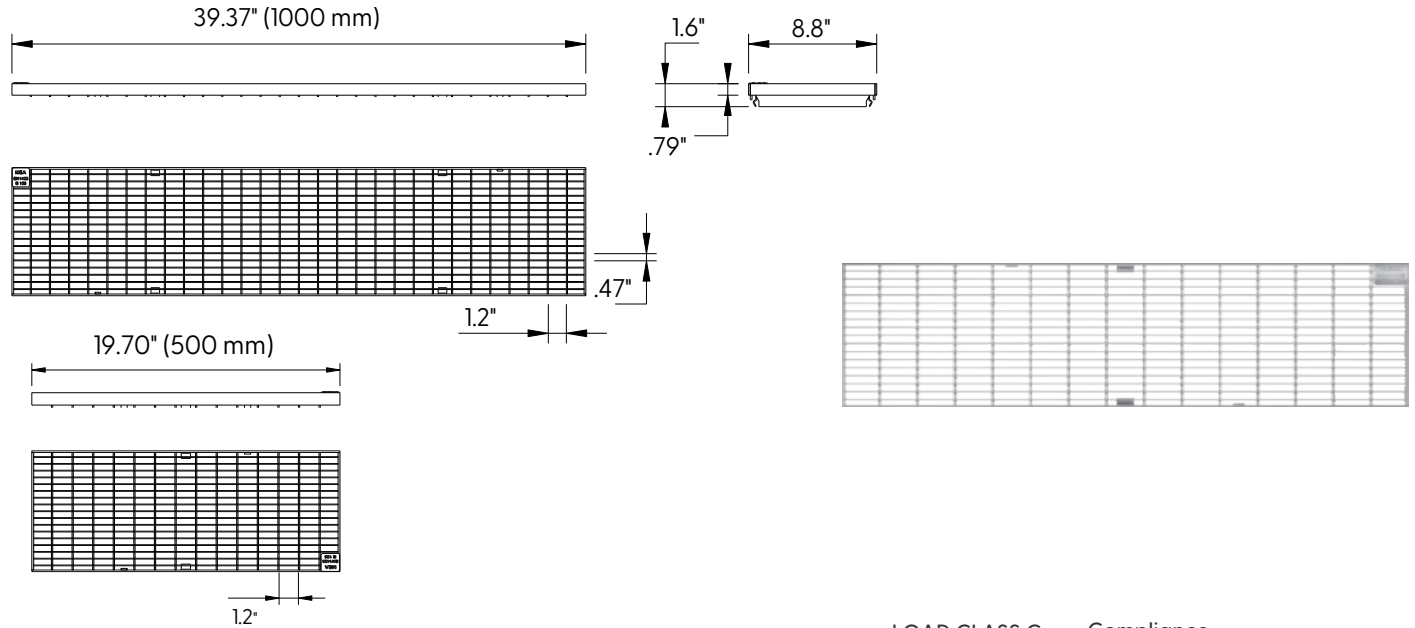
Location:



Stainless Steel Mesh Grate to suit 4" clear opening channels



Specification: T200-PGC-3-SM stainless steel mesh grates are independently certified to meet Load Class C tested in accordance with EN 1433 (56,200 lbs. 250 The grate length is 39.40" (1 m). The grates utilize the patented "Clipfix" grate locking mechanism. The system (channel and grate) provides longitudinal shift protection. Optional .5 m grates are also available in Load Class C (Part # T200-PGC-3-SM-500).



LOAD CLASS C

Compliance



EN 1433 - 56,200 LBS.,
250kN, 1160 PSI

ADA

CLIPFIX ADVANTAGE

The MEA polymer concrete and GRP channels are designed for our universal CLIPFIX grate locking mechanism. The system (channel and grate) provides longitudinal shift protection.

GRATE MODEL NUMBER	LENGTH	USED WITH
T200-PGC-3-SM	39.37" (1000 mm)	T1700 Concrete Channel
T200-PGC-3-SM-500	19.69" (500 mm)	T1700 Concrete Channel
TP200-PGC-3-SM	39.37" (1000 mm)	T2000 Plastic Channel or T1360 Aluminum Channel
TP200-PGC-3-SM-500	19.69" (500 mm)	T2000 Plastic Channel or T1360 Aluminum Channel

Supplied By:

877-903-7246
www.trenchdrainsupply.com

Job Name: _____	Page No: _____
Section No: _____	Contractor: _____
Schedule No: _____	Purchase Order No: _____

CALIFORNIA PROPOSITION 65 WARNING. This product contains chemicals known to the State of California to cause cancer and birth defects or other reproductive harm.