

Location: \_\_\_\_\_



**T1460-PB**

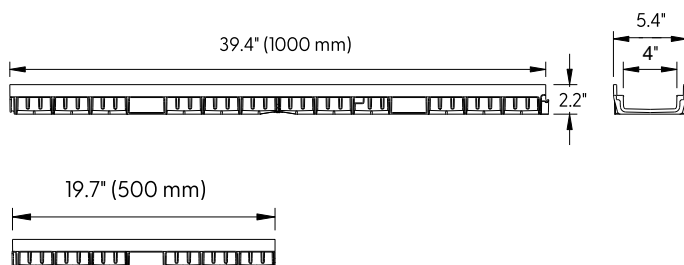
**4" Glass Reinforced Polyester (GRP)  
Shallow Channel with No Edge Rail**

**Specification:** MIFAB® T1460-PB series shallow channels shall be 39.4" (1000 mm) long with a 4" (100 mm) internal width and shallow bottom. Channels are made from high strength Glass Fiber Reinforced Polyester (GRP) with no edge rail. MIFAB's GRP channels are designed with a sealant groove in accordance with the EN1433 Standard, Section 7.5 - Connecting Channel Elements. This Standard requires all channels to have the joint between channels to be designed in such a way that it can be permanently sealed. Sealant manufacturers recommend a 3/8" bead, which the MIFAB GRP conforms to.

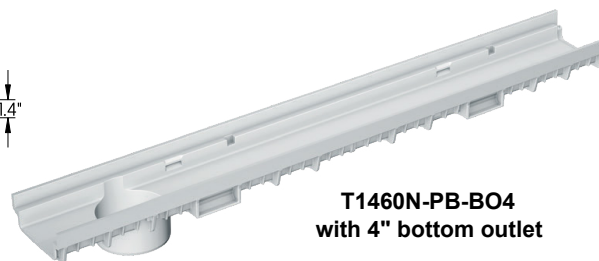
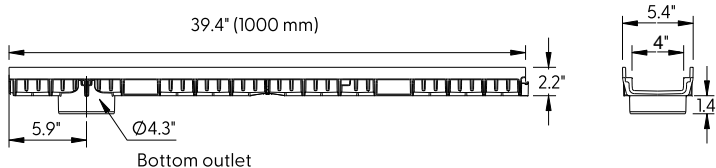


System is available with 4" preformed bottom outlet. End caps and catch basins are available accessories. Grates (separate specification sheets) are available in Load Class A-C in a variety of materials. Grates utilize the patented "Clipfix" locking mechanism.

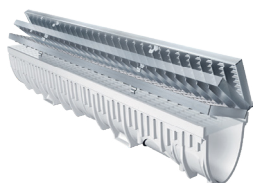
CHANNEL MODEL NUMBER	FLOW GPM	WEIGHT (LBS.)
T1460N-PB	55	4.12
T1460N-PB-500	55	2.05
T1460N-PB-BO4	55	4.12



**T1460N-PB**



**T1460N-PB-BO4  
with 4" bottom outlet**



**CLIPFIX ADVANTAGE**

The MEA Glass Fiber Reinforced Polyester (GRP) channels have been designed for our universal CLIPFIX grate locking mechanism. The system (channel and grate) provide longitudinal shift protection.

CALIFORNIA PROPOSITION 65 WARNING. This product contains chemicals known to the State of California to cause cancer and birth defects or other reproductive harm.

Job Name: \_\_\_\_\_

Page No: \_\_\_\_\_

Section No: \_\_\_\_\_

Contractor: \_\_\_\_\_

Schedule No: \_\_\_\_\_

Purchase Order No: \_\_\_\_\_