

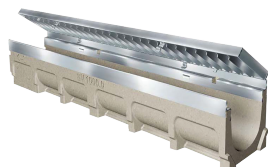
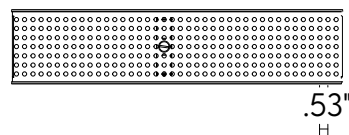
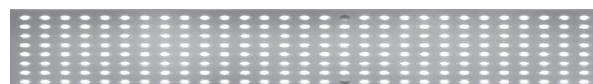
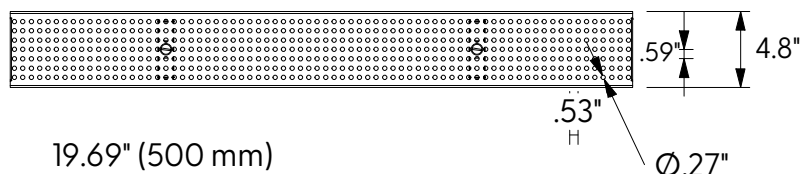
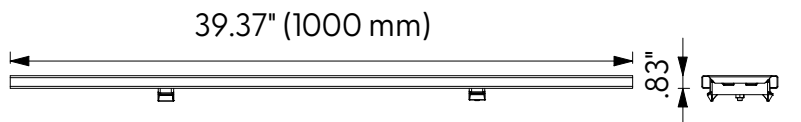
Location:



Stainless Steel Perforated Grate to suit 4" clear opening channels



Specification: T100-PGA-3-FP stainless steel perforated grates are independently certified to meet Load Class A tested in accordance with EN 1433 (3,372 lbs (15kN)). The grate length is 39.37" (1 m). The grates utilize the patented "Clipfix" grate locking mechanism. The system (channel and grate) provides longitudinal shift protection. Optional .5 meter grates are also available in Load Class A (Part # T100-PGA-3-FP-500).



CLIPFIX ADVANTAGE

The MEA polymer concrete and GRP channels are designed for our universal CLIPFIX grate locking mechanism. The system (channel and grate) provides longitudinal shift protection.

LOAD CLASS A



EN 1433 - 3,372 LBS.,
15kN, 70 PSI

Compliance



ADA



HEELPROOF

GRATE MODEL NUMBER	LENGTH	USED WITH
T100-PGA-3-FP	39.37" (1000 mm)	T1500 Concrete Channel
T100-PGA-3-FP-500	19.69" (500 mm)	T1500 Concrete Channel
TP100-PGA-3-FP	39.37" (1000 mm)	T1400 Plastic Channel or T1330 Aluminum Channel
TP100-PGA-3-FP-500	19.69" (500 mm)	T1400 Plastic Channel or T1330 Aluminum Channel

Supplied By:

**TRENCHDRAIN
SUPPLY**

877-903-7246

www.trenchdrainsupply.com

Job Name: _____

Page No: _____

Section No: _____

Contractor: _____

Schedule No: _____

Purchase Order No: _____