

CPS554 Complete Kit

Series

CPS554

Cover Sheet

LZ1000 Shallow Series

**4" Wide Shallow LZ1000 Polymer Concrete Galvanized Edge Trench Drain Kit
10 - 99 Foot Complete**

**New Shallow Galvanized Edge Commercial Trench Drain
4 Inch Wide - A Class Galvanized Grates Standard**
Complete system - Each Kit Includes:

- Specified number of 1 meter sections of trench drain
- Specified number of Galvanized Slotted Grates
- Specified Number of Galvanized Locks
- 1 - Solid End Cap and 1 - 2" End Outlet

Key advantages of LZ1000 Shallow Trench Drain:

- Available in standard 3.1 inch tall or extra shallow 2.4 inch tall.
- Meet shallow depth requirement.
- Wide selection of grate choices
- Add in linear drainage with minimal excavation.

MEA

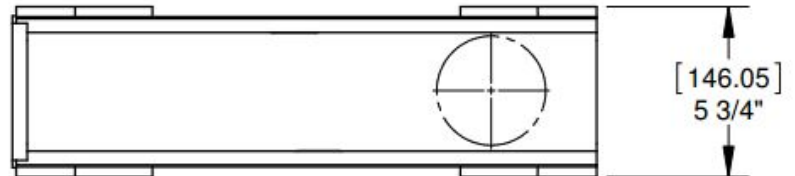
Quality engineered trench drain system

1-877-903-7246

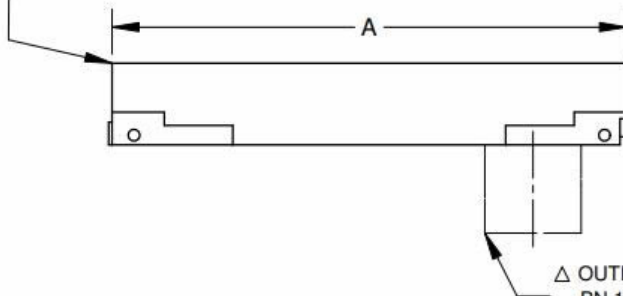


www.trenchdrainsupply.com

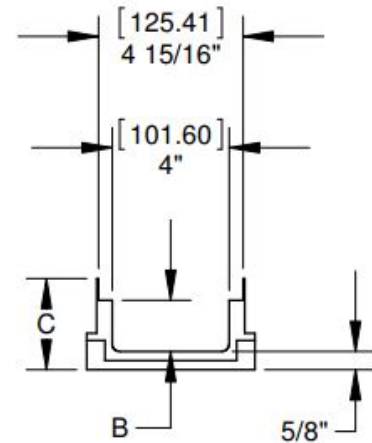
Number 155561/155571/155563/155573	Series CPS554 4" Wide Shallow Channel LZ1000 Series
---	--



GALVANIZED STEEL
PROTECTED EDGES



△ OUTLET AVAILABLE ON
PN 155565 & 155575 ONLY
(SEE SEPARATE SUBMITTAL)



	TYPE	PN	A	B	C
	LZ1000.0/60	155561	[1000mm]39.37in	[25.4mm]1.00in	[63.5mm]2.50in
	LZ1000.1/60	155563	[50cm]19.69in	[25.4mm]1.00in	[63.5mm]2.50in
△	LZ1000.0A/60	155565	[1000mm]39.37in	[25.4mm]1.00in	[63.5mm]2.50in
	LZ1000.0/80	155571	[1000mm]39.37in	[44.4mm]1.75in	[79.4mm]3.13in
	LZ1000.1/80	155573	[50cm]19.69in	[44.4mm]1.75in	[79.4mm]3.13in
△	LZ1000.0A/80	155575	[1000mm]39.37in	[44.4mm]1.75in	[79.4mm]3.13in

Manufacturer



Quality engineered trench drain system

Specification

MEA-JOSAM LZ1000 SERIES TRENCH DRAIN CONSTRUCTED OF POLYMER CONCRETE WITH GALVANIZED STEEL PROTECTED EDGES. 4" INTERIOR WIDTH, NON SLOPED, AND 4" BOTTOM OUTLET. MEETS LOAD CLASS A, B, AND C. COMPATIBLE WITH 1000 SERIES GRATES. SUPPLIED BY TRENCH DRAIN SUPPLY.

DISCLAIMER - The customer and the customer's architects, engineers, consultants, and other professionals are completely responsible for the selection installation and maintenance of any product purchased from Trench Drain Supply and/or its manufacturers. TRENCH DRAIN SUPPLY MAKES NO WARRANTY, EXPRESS OR IMPLIED, AS TO THE SUITABILITY, DESIGN, MERCHANTABILITY, OR FITNESS OF THE PRODUCT FOR CUSTOMERS APPLICATION. The drawing and information provided remain the property and copyright of the manufacturer listed. The manufacturer reserves the right to modify specification without notice.

1-877-903-7246



www.trenchdrainsupply.com

Number

LZ1000 End Caps

Series

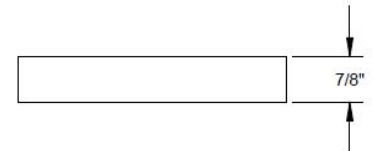
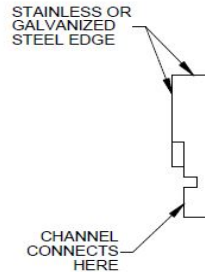
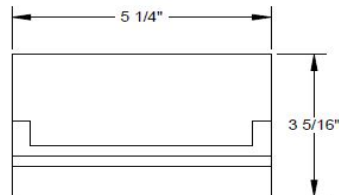
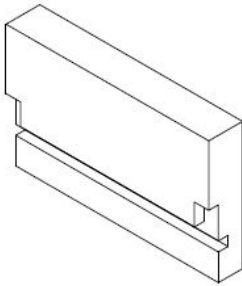
CPS554

4" Wide Shallow End Caps

LZ1000 Series 3.1 Inch Depth

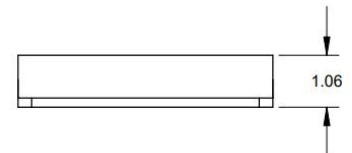
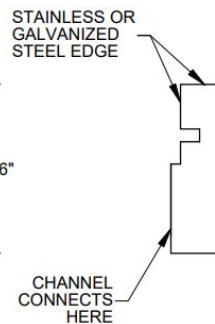
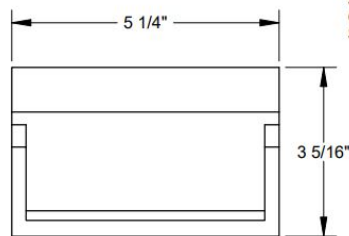
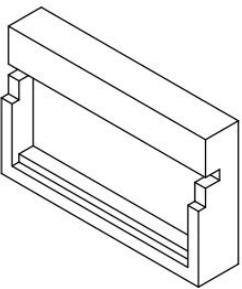
155577

80MM - 3.1 Inch Depth for Channel Start



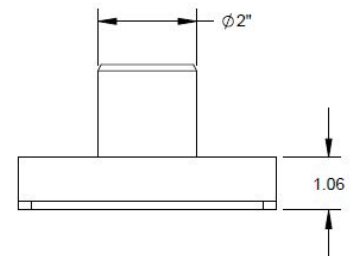
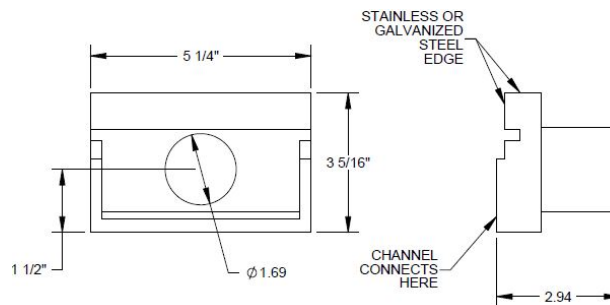
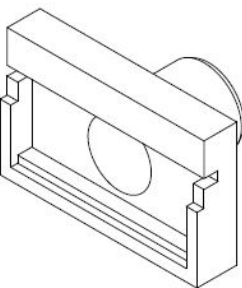
155579

80MM - 3.1 Inch Depth For Channel End



155581

80MM - 3.1 Inch Depth 2" Outlet Endcap



Manufacturer



Quality engineered trench drain system

Specification


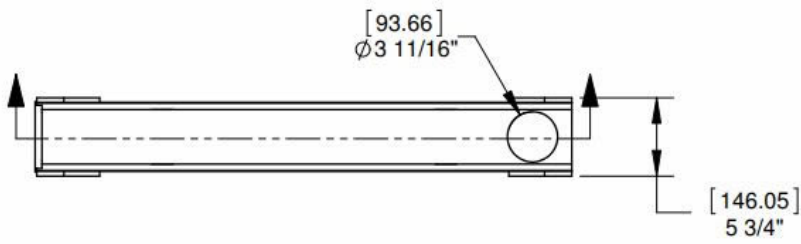
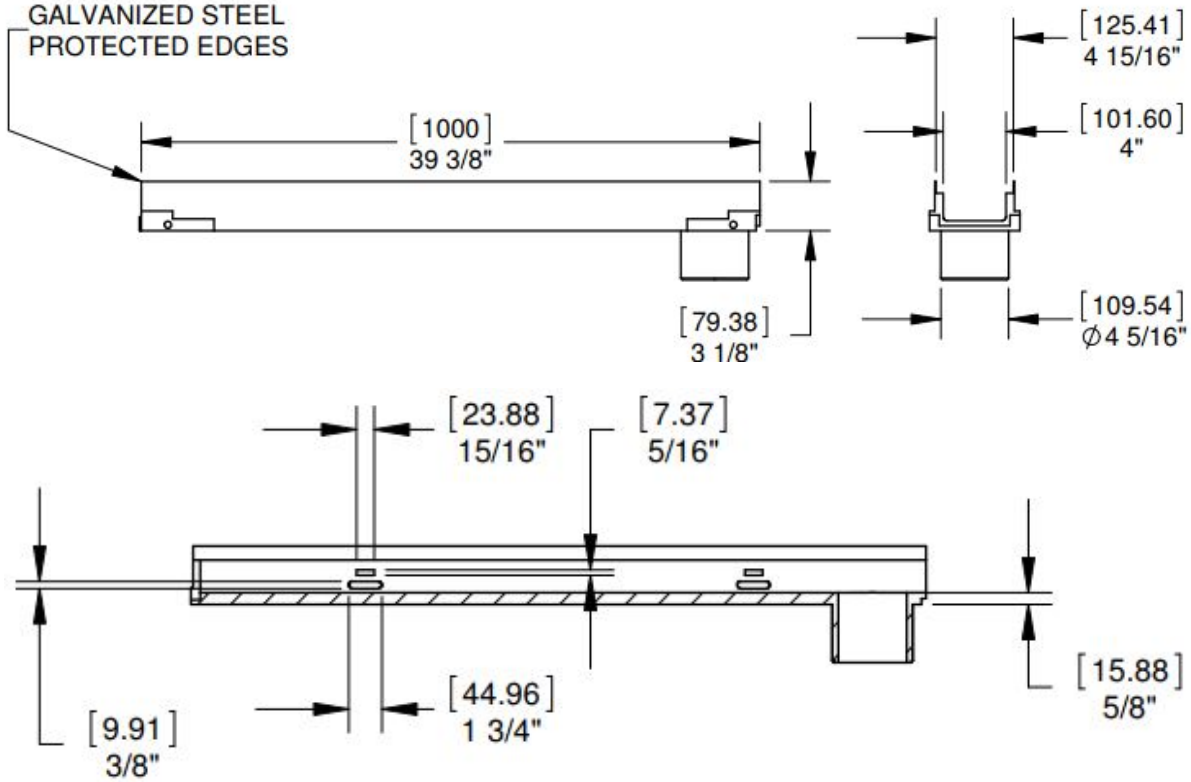

MEA-JOSAM LZ1000 SERIES TRENCH DRAIN EEND CAP SET CONSTRUCTED OF POLYMER CONCRETE WITH GALVANIZED STEEL PROTECTED EDGES. MEETS LOAD CLASS A, B, AND C. SUPPLIED BY TRENCH DRAIN SUPPLY.

DISCLAIMER - The customer and the customer's architects, engineers, consultants, and other professionals are completely responsible for the selection installation and maintenance of any product purchased from Trench Drain Supply and/or its manufacturers. TRENCH DRAIN SUPPLY MAKES NO WARRANTY, EXPRESS OR IMPLIED, AS TO THE SUITABILITY, DESIGN, MERCHANTABILITY, OR FITNESS OF THE PRODUCT FOR CUSTOMERS APPLICATION. The drawing and information provided remain the property and copyright of the manufacturer listed. The manufacturer reserves the right to modify specification without notice.

1-877-903-7246



www.trenchdrainsupply.com

<p>Number</p> <p>155575</p>	<p>Series</p> <p>CPS554</p> <p>4" Wide Shallow Bottom Outlet</p> <p>LZ1000 Series 3.1 inch Depth</p>
<div style="display: flex; justify-content: space-around; align-items: flex-start;">  <div style="text-align: center;"> <p>80MM - 3.1 Inch Depth</p>  </div> </div> <div style="margin-top: 20px;"> <p>GALVANIZED STEEL PROTECTED EDGES</p>  </div>	
<p>Manufacturer</p> <div style="border: 1px solid black; padding: 5px; text-align: center;">  </div> <p>Quality engineered trench drain system</p>	<p>Specification</p> <p>MEA-JOSAM LZ1000 SERIES TRENCH DRAIN CONSTRUCTED OF POLYMER CONCRETE WITH GALVANIZED STEEL PROTECTED EDGES. 4" INTERIOR WIDTH, NON SLOPED, AND 4" BOTTOM OUTLET. MEETS LOAD CLASS A, B, AND C. COMPATIBLE WITH 1000 SERIES GRATES. SUPPLIED BY TRENCH DRAIN SUPPLY.</p>
<p>DISCLAIMER - The customer and the customer's architects, engineers, consultants, and other professionals are completely responsible for the selection installation and maintenance of any product purchased from Trench Drain Supply and/or its manufacturers. TRENCH DRAIN SUPPLY MAKES NO WARRANTY, EXPRESS OR IMPLIED, AS TO THE SUITABILITY, DESIGN, MERCHANTABILITY, OR FITNESS OF THE PRODUCT FOR CUSTOMERS APPLICATION. The drawing and information provided remain the property and copyright of the manufacturer listed. The manufacturer reserves the right to modify specification without notice.</p>	

1-877-903-7246

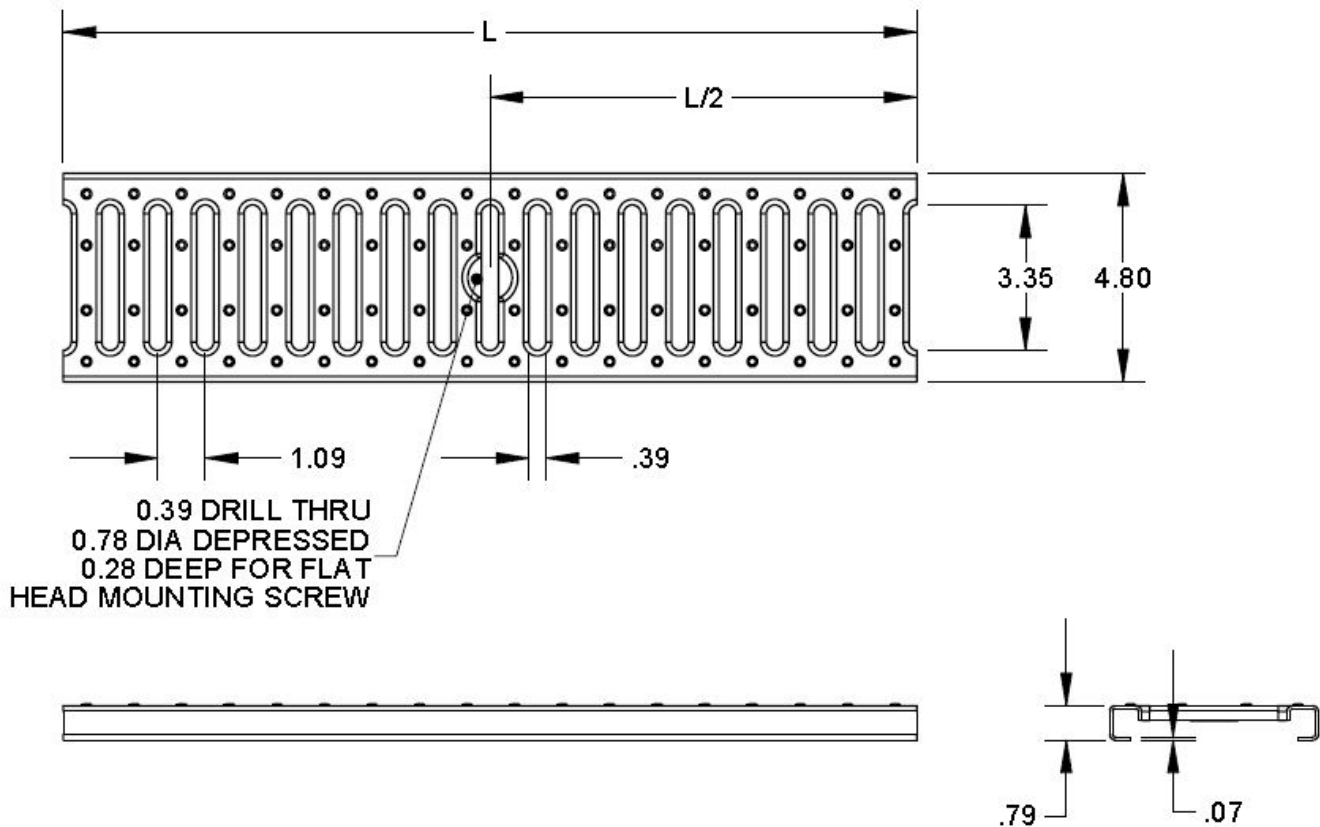


www.trenchdrainsupply.com

Number	Series
152101	152101 A Galvanized Steel Slotted 1000 Series Grates



PART NUMBER	"L" DIMENSION	FREE AREA
152101	39.4" [1000mm]	45.8 SQ. IN.



Manufacturer



Quality engineered trench drain system

Specification

MEA 152101 GALVANIZED STEEL SLOTTED TRENCH DRAIN GRATE WITH CLASS A LOAD RATING (3,500 LBS. - 70 PSI), SUPPLIED BY TRENCH DRAIN SUPPLY.

DISCLAIMER - The customer and the customer's architects, engineers, consultants, and other professionals are completely responsible for the selection installation and maintenance of any product purchased from Trench Drain Supply and/or its manufacturers. TRENCH DRAIN SUPPLY MAKES NO WARRANTY, EXPRESS OR IMPLIED, AS TO THE SUITABILITY, DESIGN, MERCHANTABILITY, OR FITNESS OF THE PRODUCT FOR CUSTOMERS APPLICATION. The drawing and information provided remain the property and copyright of the manufacturer listed. The manufacturer reserves the right to modify specification without notice.

1-877-903-7246

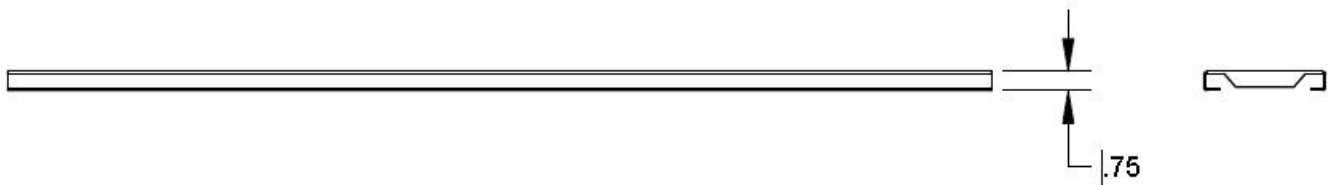
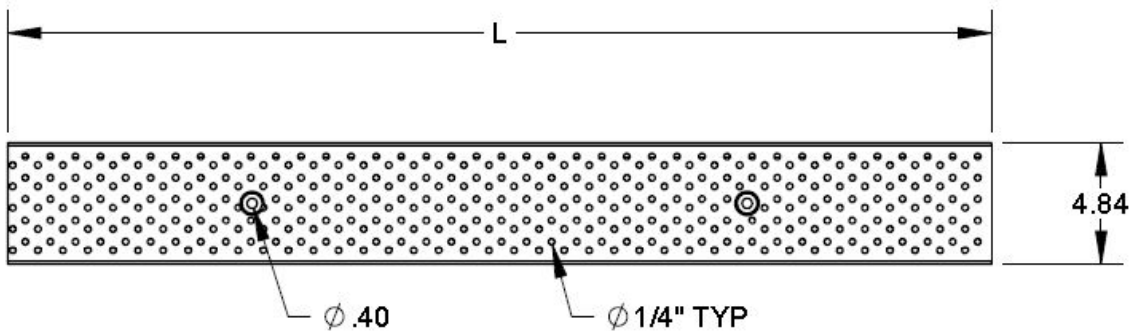


www.trenchdrainsupply.com

Number 152105	Series 152105 A Galvanized Steel Perforated 1000 Series Grates
-------------------------	--



PART NUMBER	"L" DIMENSION	FREE AREA
152105	39.3"	37.5 SQ. IN.



Manufacturer



Quality engineered trench drain system

Specification

MEA 152105 GALVANIZED STEEL PERFORATED GRATE WITH RECESSES FOR LOCKING BAR SECURING FEATURE AND 1/4" PERFORATIONS DESIGNED TO FIT 100 AND 1000 SERIES CHANNELS. WITH CLASS A LOAD RATING (3,500 LBS. - 70 PSI), SUPPLIED BY TRENCH DRAIN SUPPLY.

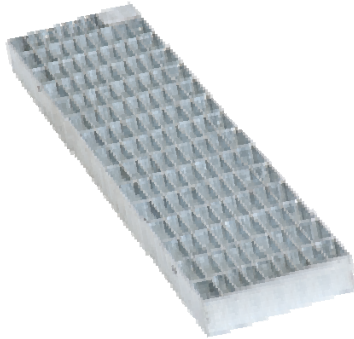
DISCLAIMER - The customer and the customer's architects, engineers, consultants, and other professionals are completely responsible for the selection installation and maintenance of any product purchased from Trench Drain Supply and/or its manufacturers. TRENCH DRAIN SUPPLY MAKES NO WARRANTY, EXPRESS OR IMPLIED, AS TO THE SUITABILITY, DESIGN, MERCHANTABILITY, OR FITNESS OF THE PRODUCT FOR CUSTOMERS APPLICATION. The drawing and information provided remain the property and copyright of the manufacturer listed. The manufacturer reserves the right to modify specification without notice.

1-877-903-7246

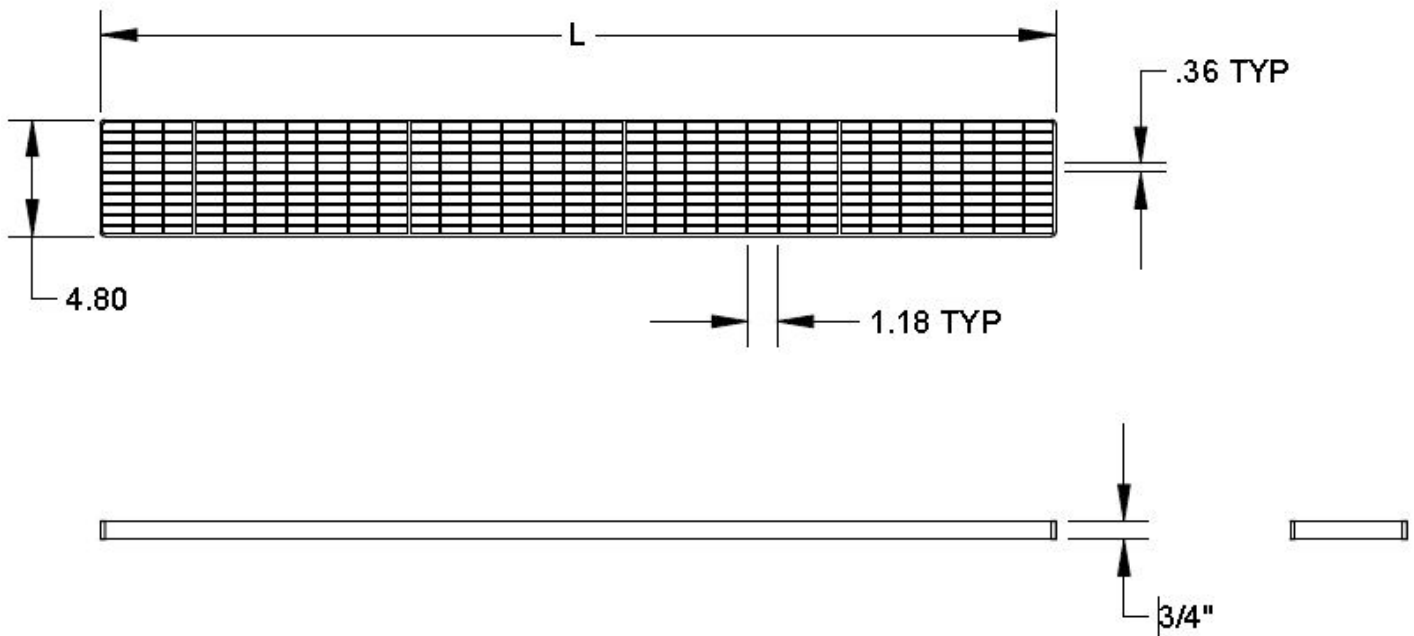



www.trenchdrainsupply.com

Number	Series
152801	152801 A Galvanized Steel Mesh 1000 Series Grates



PART NUMBER	"L" DIMENSION	FREE AREA
152801	39.4"	144.8 SQ. IN.




Manufacturer	Specification
 Quality engineered trench drain system	MEA 152801 GALVANIZED STEEL MESH TRENCH DRAIN GRATE WITH CLASS A LOAD RATING (3,500 LBS. - 70 PSI), SUPPLIED BY TRENCH DRAIN SUPPLY.

DISCLAIMER - The customer and the customer's architects, engineers, consultants, and other professionals are completely responsible for the selection installation and maintenance of any product purchased from Trench Drain Supply and/or its manufacturers. TRENCH DRAIN SUPPLY MAKES NO WARRANTY, EXPRESS OR IMPLIED, AS TO THE SUITABILITY, DESIGN, MERCHANTABILITY, OR FITNESS OF THE PRODUCT FOR CUSTOMERS APPLICATION. The drawing and information provided remain the property and copyright of the manufacturer listed. The manufacturer reserves the right to modify specification without notice.

1-877-903-7246




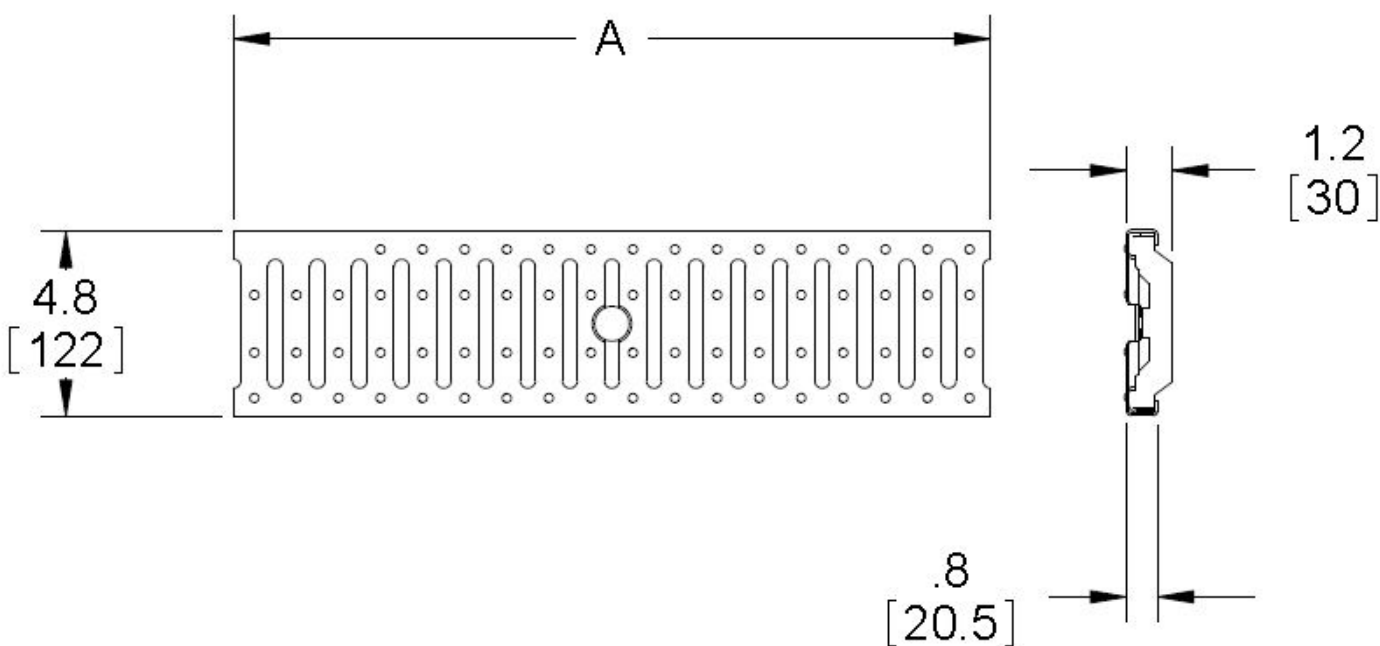

www.trenchdrainsupply.com

Number 152312	Series 152312 B Galvanized Steel Mesh 1000 Series Grates
<div data-bbox="164 407 534 873"></div> <div data-bbox="771 577 1222 617">FREE AREA: 144.8 SQ. IN.</div> <div data-bbox="154 982 1484 1591"></div>	
Manufacturer <div data-bbox="155 1707 617 1829"> Quality engineered trench drain system</div>	Specification MEA 152312 GALVANIZED STEEL MESH GRATE DESIGNED TO FIT 100 AND 1000 SERIES CHANNELS. MEETS CLASS B LOADING REQUIREMENTS (26,100 LBS - 580 PSI). SUPPLIED BY TRENCH DRAIN SUPPLY.
<p>DISCLAIMER - The customer and the customer's architects, engineers, consultants, and other professionals are completely responsible for the selection installation and maintenance of any product purchased from Trench Drain Supply and/or its manufacturers. TRENCH DRAIN SUPPLY MAKES NO WARRANTY, EXPRESS OR IMPLIED, AS TO THE SUITABILITY, DESIGN, MERCHANTABILITY, OR FITNESS OF THE PRODUCT FOR CUSTOMERS APPLICATION. The drawing and information provided remain the property and copyright of the manufacturer listed. The manufacturer reserves the right to modify specification without notice.</p>	

1-877-903-7246




www.trenchdrainsupply.com

<div>Number</div> <div>152711</div>		<div>Series</div> <div>152711</div> <div>C Galvanized Steel Slotted</div> <div>1000 Series Grates</div>					
<div><div></div><div><table><tr><th>PART NO.</th><th>A</th></tr><tr><td>152711</td><td>39.3 [1000]</td></tr></table></div></div> <div><div></div><div>152731 SHOWN</div></div>				PART NO.	A	152711	39.3 [1000]
PART NO.	A						
152711	39.3 [1000]						
<div>Manufacturer</div> <div><div></div><div>Quality engineered trench drain system</div></div>		<div>Specification</div> <div>MEA 152711 REINFORCED GALVANIZED STEEL SLOTTED GRATE WITH AVAILABLE LOCKING BAR SECURING FEATURE AND CLASS C LOAD RATING (56,000 LBS. - 1,162 PSI). SUPPLIED BY TRENCH DRAIN SUPPLY.</div>					
<div>DISCLAIMER - The customer and the customer's architects, engineers, consultants, and other professionals are completely responsible for the selection installation and maintenance of any product purchased from Trench Drain Supply and/or its manufacturers. TRENCH DRAIN SUPPLY MAKES NO WARRANTY, EXPRESS OR IMPLIED, AS TO THE SUITABILITY, DESIGN, MERCHANTABILITY, OR FITNESS OF THE PRODUCT FOR CUSTOMERS APPLICATION. The drawing and information provided remain the property and copyright of the manufacturer listed. The manufacturer reserves the right to modify specification without notice.</div>							

1-877-903-7246



www.trenchdrainsupply.com

Number 152411	Series 152411 C Ductile Iron Slotted 1000 Series Grates
<div data-bbox="118 415 464 699"></div> <div data-bbox="881 474 1227 541"></div> <div data-bbox="963 579 1140 636"><p>SECTION A-A SCALE 1 : 2</p></div> <div data-bbox="272 768 1320 1312"><p>0.40 DRILL THRU 0.80 DIA DEPRESSED 0.28 DEEP FOR FLAT HEAD MOUNTING SCREW</p></div> <div data-bbox="305 1381 1453 1591"></div>	
Manufacturer  Quality engineered trench drain system	Specification MEA 152411 DUCTILE IRON SLOTTED GRATE, DESIGNED TO FIT 100 AND 1000 SERIES CHANNELS. MEETS CLASS C LOADING REQUIREMENTS (56,000 LBS - 1,162 PSI), SUPPLIED BY TRENCH DRAIN SUPPLY.
<p>DISCLAIMER - The customer and the customer's architects, engineers, consultants, and other professionals are completely responsible for the selection installation and maintenance of any product purchased from Trench Drain Supply and/or its manufacturers. TRENCH DRAIN SUPPLY MAKES NO WARRANTY, EXPRESS OR IMPLIED, AS TO THE SUITABILITY, DESIGN, MERCHANTABILITY, OR FITNESS OF THE PRODUCT FOR CUSTOMERS APPLICATION. The drawing and information provided remain the property and copyright of the manufacturer listed. The manufacturer reserves the right to modify specification without notice.</p>	