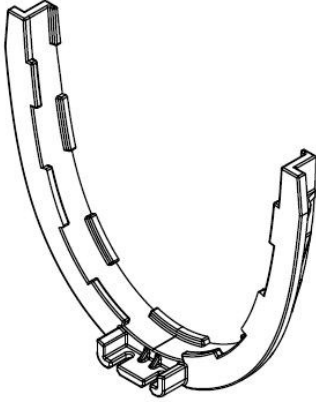
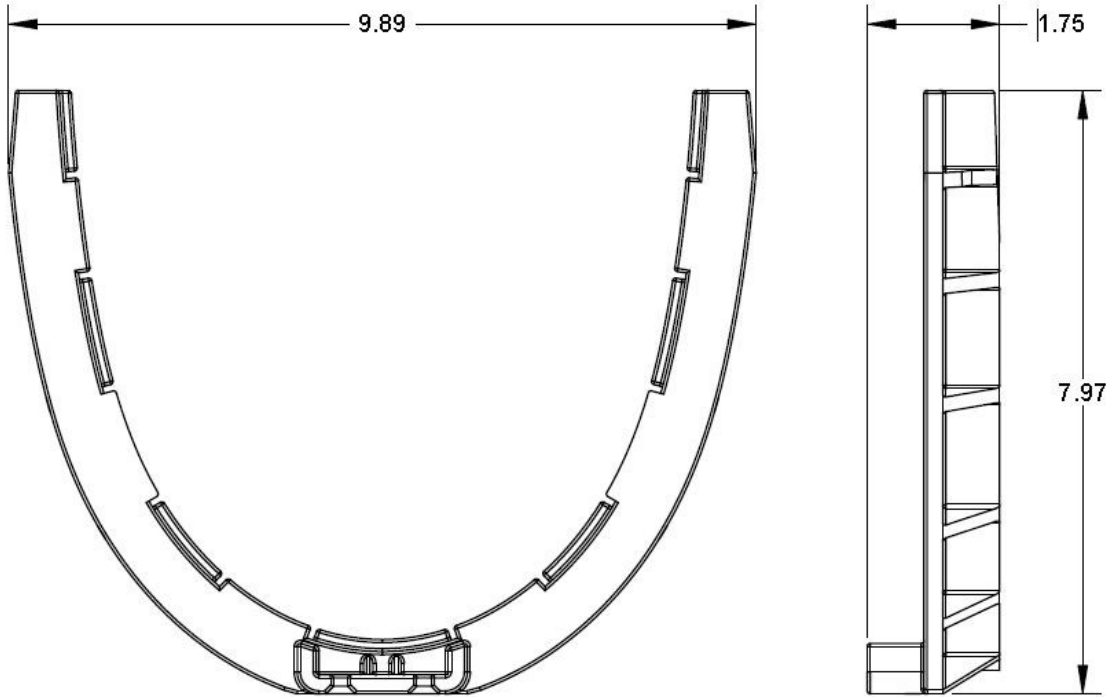


<p>Number</p> <p style="text-align: center;">200-BSC</p>	<p>Series</p> <p style="text-align: center;">CPS200</p> <p style="text-align: center;">Male to Male Support Bracket Pro Plus 200</p>
--	--



200-BSC Male to Male Support Bracket



Manufacturer



Specification

JOSAM 200-BSC MALE TO MALE SUPPORT BRACKET FOR PRO-PLUS 200C 8" INTERNAL WIDTH TRENCH CHANNELS. MADE WITH PVC MATERIAL TO SUPPORT TWO MALE END CONNECTIONS FOR TRENCH RUNS WITH CENTER OUTLET CONFIGURATIONS. INCLUDES TWO SCREWS TO SECURE TO BOTTOM OF ONE CHANNEL. THIS BRACKET ONLY JOINS A MALE END TO MALE END. USE A 200-BS NEARBY FOR SUPPORT

DISCLAIMER - The customer and the customer's architects, engineers, consultants, and other professionals are completely responsible for the selection installation and maintenance of any product purchased from Trench Drain Supply and/or its manufacturers. TRENCH DRAIN SUPPLY MAKES NO WARRANTY, EXPRESS OR IMPLIED, AS TO THE SUITABILITY, DESIGN, MERCHANTABILITY, OR FITNESS OF THE PRODUCT FOR CUSTOMERS APPLICATION. The drawing and information provided remain the property and copyright of the manufacturer listed. The manufacturer reserves the right to modify specification without notice.