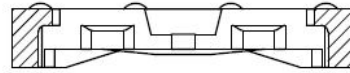


1-877-903-7246

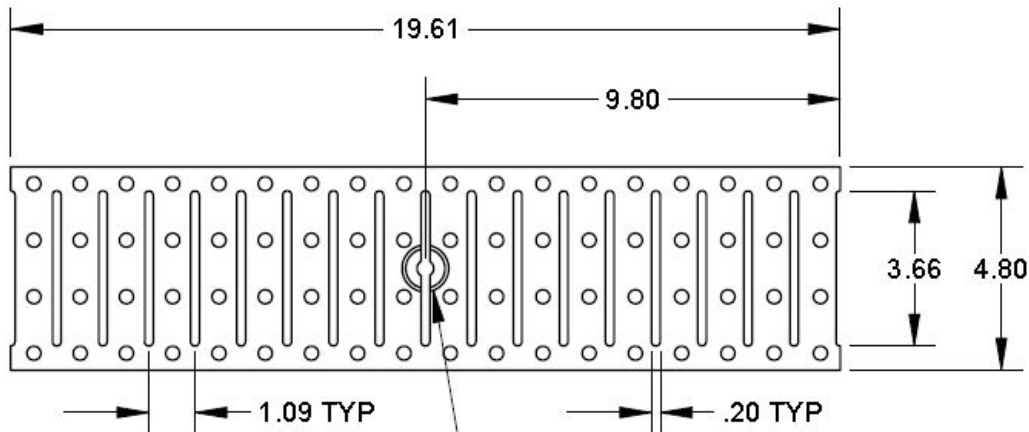


www.trenchdrainsupply.com

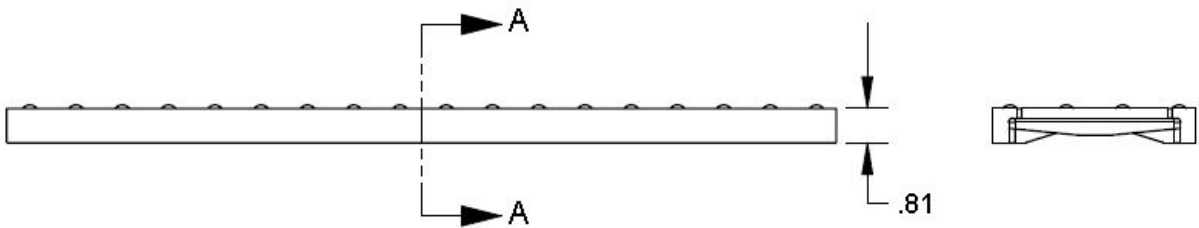
<p>Number</p> <p style="text-align: center;">152541</p>	<p>Series</p> <p style="text-align: center;">152541</p> <p style="text-align: center;">C Ductile Iron Heel Guard 1000 Series Grates</p>
---	---



SECTION A-A
SCALE 1 : 2



0.40 DRILL THRU
0.80 DIA DEPRESSED
0.28 DEEP FOR FLAT
HEAD MOUNTING SCREW



Manufacturer



Quality engineered trench drain system

Specification

MEA 152541 TRENCH GRATE MADE OF DUCTILE IRON WITH SLOTS. MEETS LOADING CLASS C (56,000 LBS - 1,162 PSI). THIS GRATE IS HEELPROOF AND ADA COMPLIANT - SUPPLIED BY TRENCH DRAIN SUPPLY.

DISCLAIMER - The customer and the customer's architects, engineers, consultants, and other professionals are completely responsible for the selection installation and maintenance of any product purchased from Trench Drain Supply and/or its manufacturers. TRENCH DRAIN SUPPLY MAKES NO WARRANTY, EXPRESS OR IMPLIED, AS TO THE SUITABILITY, DESIGN, MERCHANTABILITY, OR FITNESS OF THE PRODUCT FOR CUSTOMERS APPLICATION. The drawing and information provided remain the property and copyright of the manufacturer listed. The manufacturer reserves the right to modify specification without notice.