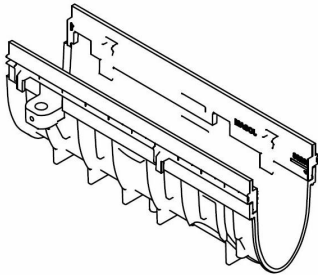
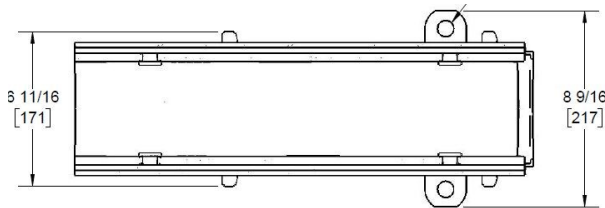


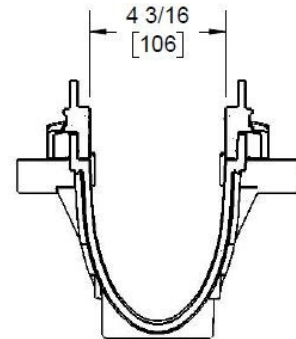
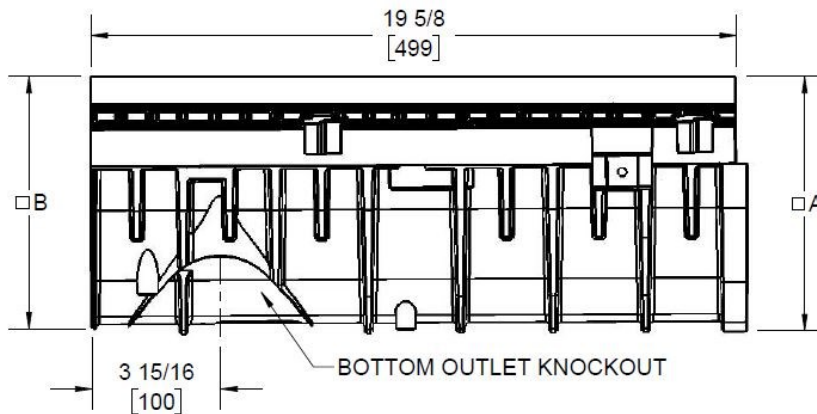
Number 100C-11-S	Series CPS100 100-C Half Channel Sloped Pro Plus 100
---------------------------------------	---



100-C Half Presloped



PART NUMBER	DIM "A"	DIM "B"	WEIGHT (LBS)
100C-11	6.5	6.5	4.6
100C01-11	7.5	7.6	6.2
100C02-11	7.7	7.8	6.3
100C03-11	7.9	8.0	6.4
100C04-11	8.1	8.2	6.5
100C05-11	8.3	8.4	6.5
100C05N-11	8.5	8.5	6.6
100C06-11	8.5	8.6	6.7
100C07-11	8.7	8.8	6.8
100C08-11	8.9	9.0	6.9
100C09-11	9.1	9.2	7.0
100C10-11	9.3	9.4	7.1
100C11-11	9.5	9.6	8.6
100C12-11	9.7	9.8	8.7
100C13-11	9.9	10.0	8.8
100C14-11	10.1	10.2	8.9
100C15-11	10.3	10.4	9.0
100C15N-11	10.5	10.5	9.1
100C16-11	10.5	10.6	9.1
100C17-11	10.7	10.8	9.2
100C18-11	10.9	11.0	9.3
100C19-11	11.1	11.2	9.4
100C20-11	11.3	11.4	9.5



U.S. Patent No. 7,736,092

Manufacturer



Specification

JOSAM 100C-11 CHANNEL. 19.7" (500mm) LONG WITH 4"(102mm) INTERNAL WIDTH AND RADIUS BOTTOM. PRESLOPED CHANNEL. STANDARD 1/2 METER WITH MALE AND FEMALE ENDS, SUPPLIED BY TRENCH DRAIN SUPPLY.

DISCLAIMER - The customer and the customer's architects, engineers, consultants, and other professionals are completely responsible for the selection installation and maintenance of any product purchased from Trench Drain Supply and/or its manufacturers. TRENCH DRAIN SUPPLY MAKES NO WARRANTY, EXPRESS OR IMPLIED, AS TO THE SUITABILITY, DESIGN, MERCHANTABILITY, OR FITNESS OF THE PRODUCT FOR CUSTOMERS APPLICATION. The drawing and information provided remain the property and copyright of the manufacturer listed. The manufacturer reserves the right to modify specification without notice.