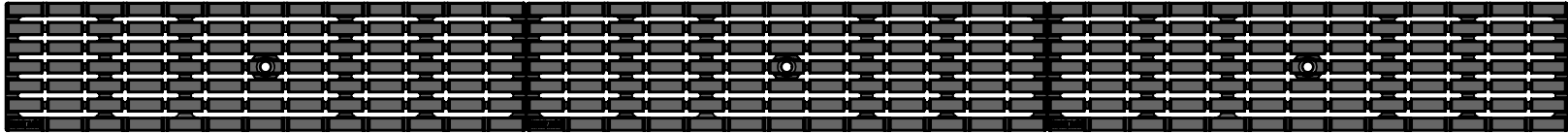


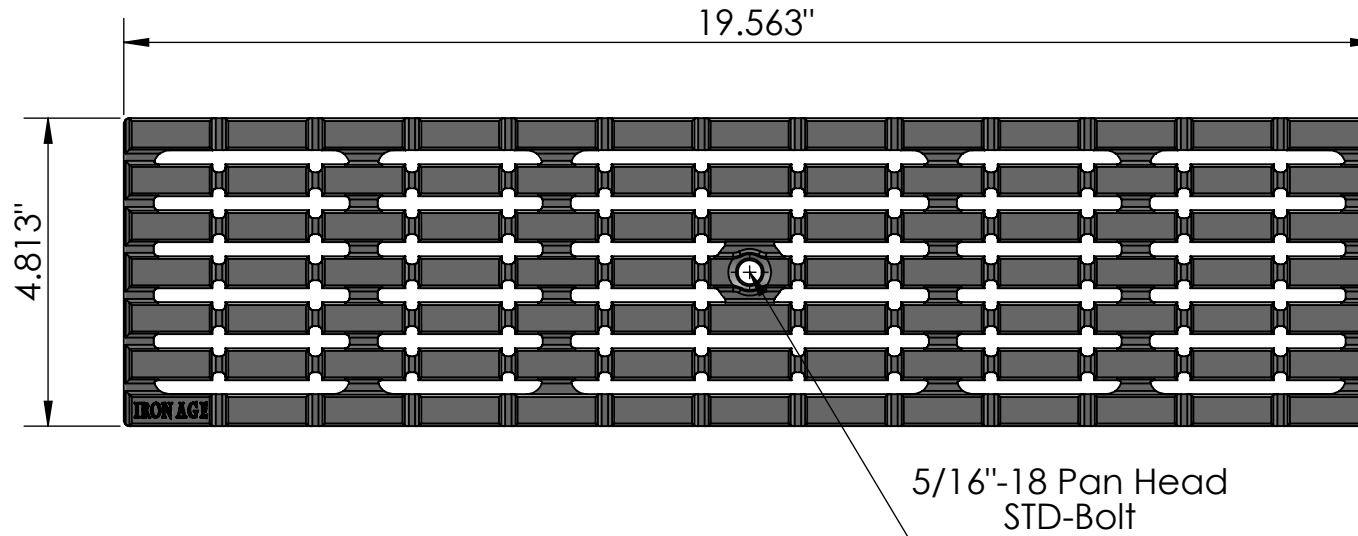
### 3 ARRAY

scale 1:7



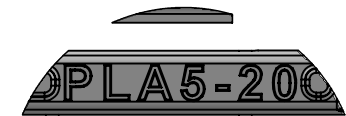
### TOP VIEW

scale 1:3



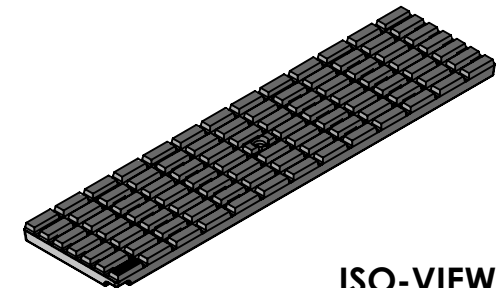
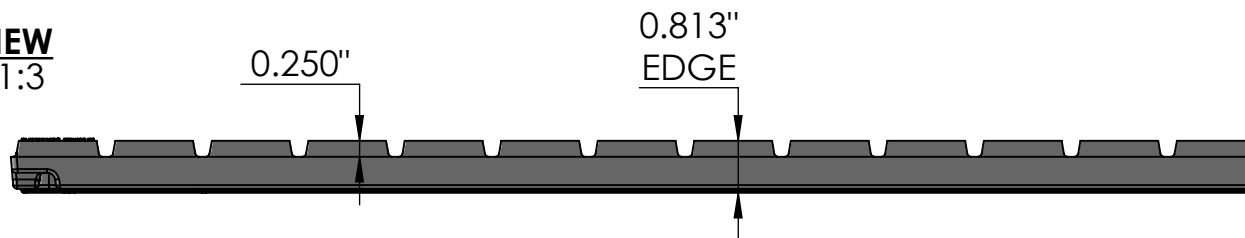
### CASTING-ID

scale 1:1.5



### SIDE VIEW

scale 1:3



### ISO-VIEW

scale 1:7


## Plex 5" x 20" Trench Grate

Supplied By:  
**TRENCHDRAIN  
 SUPPLY**  
 877-903-7246  
 www.trenchdrainsupply.com

### NOTES:

1. ADA Compliant: No thru openings greater than 1/2".
2. Ships in pieces: 1
3. Due to casting inconsistencies, all dimensions are nominal.

Made in USA ©2019 Iron Age Designs

 <b>IRON AGE DESIGNS</b> Telephone 206.276.0925 www.ironagedesigns.com	<b>Material:</b> Ductile Iron 65-45-12	<b>Weight:</b> 9.34 lbs.	<b>Free Drain Area:</b> 24.12 in/sq., or 25.62 %	<b>By:</b> MS	<b>Checked:</b> MS	<b>Date:</b> 2-3-21
	<b>Finish:</b> Raw	<b>Edge:</b> 0.8125"	<b>Flow Rate:</b> 31.60 GPM, or .070 CuFt./sec.	<b>© Registration:</b> VA 2-159-675		
	<b>Fits:</b> ACO™ K100, K100S, KS100 MEGA® 1000 Series	<b>Product ID:</b> PLA5-20121	<b>Drawing Name:</b> 02_PLA_5x20_TrenchGrate_Iron	<b>Scale:</b> NTS		