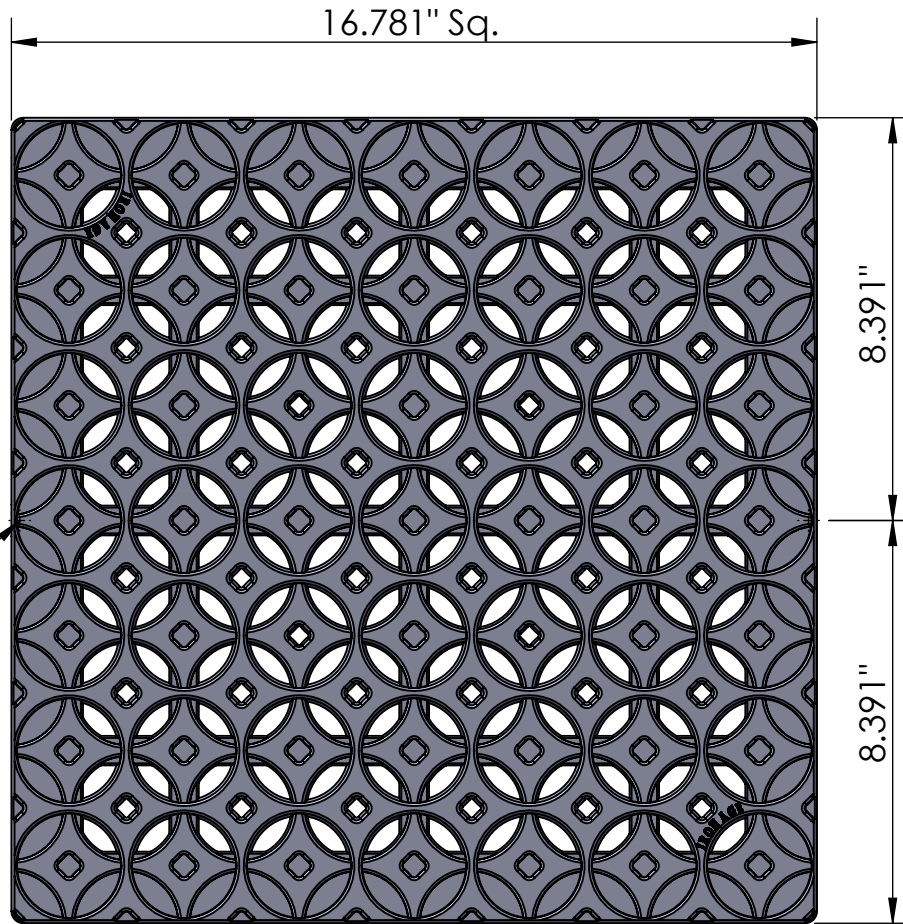
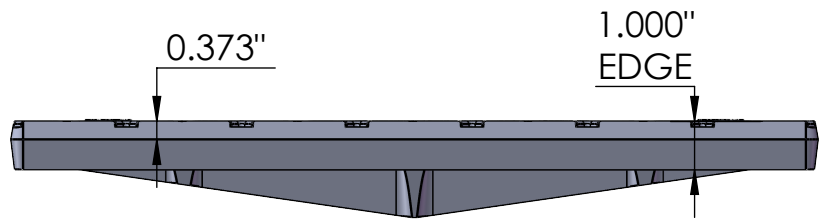


TOP VIEW
scale 1:4

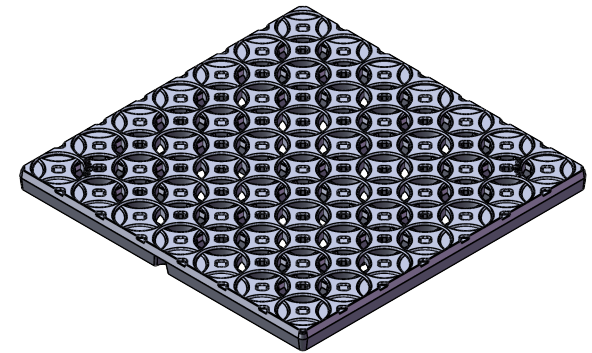


(x2) Drill Point

SIDE VIEW
scale 1:4



ISO-VIEW
scale 1:8




NOTES:

1. ADA Compliant: No thru openings greater than 1/2".
2. Ships in pieces: 1
3. Due to casting inconsistencies, all dimensions are nominal.

Made in USA ©2009 Iron Age Designs

Supplied By:
TRENCHDRAIN SUPPLY
877-903-7246
www.trenchdrainsupply.com

Interlaken 17"x 17" Catch Basin Grate

 IRON AGE DESIGNS Telephone 206.276.0925 www.ironagegrates.com	Material: Ductile Iron 65-45-12	Weight: 40.80 lbs.	Free Drain Area: 43.08 in/sq., or 15.30 %	By: MS	Checked: MS	Date: 4-28-22
	Finish: Raw	Edge: 1.00"	Flow Rate: 56.43 GPM, or 0.125 CuFt./sec.	© Registration: VA 2-159-758 Scale: NTS		
	Fits: NDS® 1800 Series (by others)	Product ID: IN18-18113	Drawing Name: 006_INT_17x17_CatchBasin			