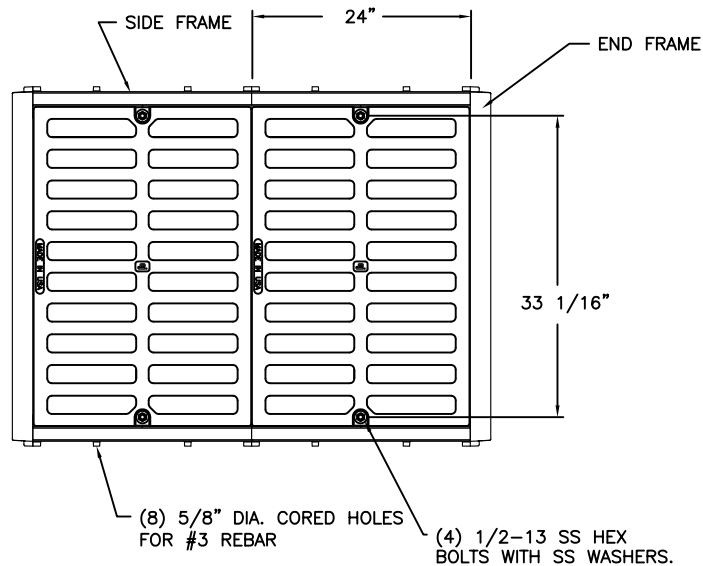
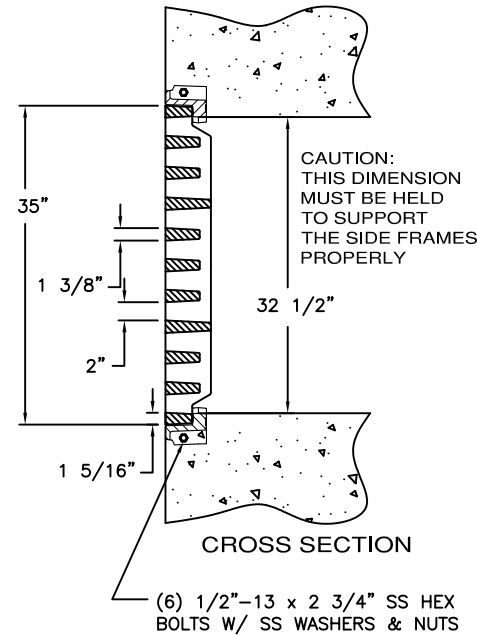


# 5436Z1 5436Z2 5436M1 Assembly



**CAUTION:**  
DO NOT  
DISASSEMBLE  
BOLTED GRATES  
BEFORE SETTING  
SECTIONS IN  
CONCRETE.



## Product Number

00543633B02

## Design Features

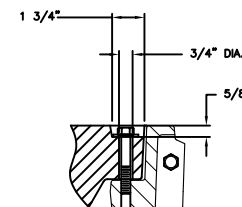
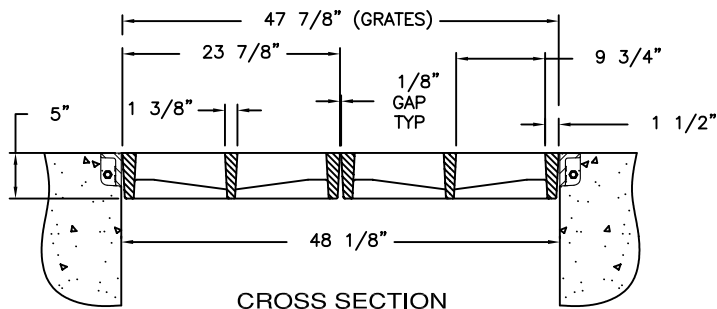
- Materials
  - Frame
    - Ductile Iron (80-55-06)
  - Frame
    - Ductile Iron (80-55-06)
  - Grate
    - Ductile Iron (70-50-05)
- Design Load
  - Airport Extra Heavy Duty (Proof Load Tested to 200,00 lbs.)
- Open Area
  - 769 sq in
- Coating
  - Undipped
- √ Designates Machined Surface

## Certification

- ASTM A536
- ASTM A536
- Country of Origin: USA

## Major Components

00543618  
00543619  
00543633



COUNTERBORE DETAIL

## Drawing Revision

3/29/2011 Designer: SBB  
3/19/2013 Revised By: DJH

## Disclaimer

Weights (lbs./kg) dimensions (inches/mm) and drawings provided for your guidance. We reserve the right to modify specifications without prior notice.

CONFIDENTIAL: This drawing is the property of EJ GROUP, Inc., and embodies confidential information, registered marks, patents, trade secret information, and/or know how that is the property of EJ GROUP, Inc. Copyright © 2012 EJ GROUP, Inc. All rights reserved.

## Contact

800 626 4653  
ejco.com

Supplied By:

**TRENCHDRAIN  
SUPPLY**

877-903-7246

www.trenchdrainsupply.com